

frost-trol

SOLID LINES



PLUG-IN

OWEL

Display Counter



OWEL CU



PVCU|00|78|22|C000|17

Highlights

Versatile plug-in model with narrower tray to accommodate establishments with small dimensions.

Wide load capacity.

Lighting flow optimized for proper exposure meat products.

Multiple combinations of glasses to fit specific service needs.

Standard equipment

Evaporator R290

Condensate evaporation tray

Electronic control

Pre-lacquered indoor deposit kit

Thermostatic expansion valve

Natural defrost

Mechanical fans

Protection fans



OWEL LR

PVLR|00|78|22|C000|17



Options and Accessories

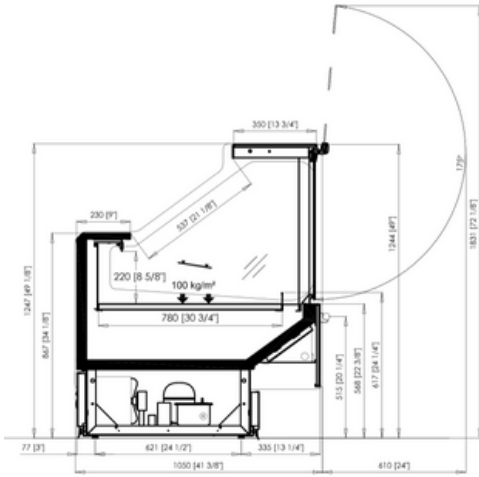
- Manual night curtain available with models that have single lighting
- Gable ends:
 - Panoramic (Thermopan)
 - Supermirror mirror
 - Intermedio V2 (panorámico/espejo a 2 caras)
- Tank kit in stainless steel AISI-304 or AISI-316:
 - Tank
 - Plate and fan cover kit / evaporator cover / brake
- Lighting:
 - Single/double over tray: for TR/CU models exclusively
 - Integrated LED (3000K, 4000K y 076)
 - Integrated LED front lighting (3000K, 4000K y 076)
- Electric defrost
- Interior anti-fogging system
- Front anti-condensation system with electric heaters (for TR/CU models)
- Front plaque electrical system especially suitable for wall-mounted models (for LS/LR models)
- Glass Shelf (for TR/CU models)
- Integrated rear methacrylate closure
- Stainless steel bumper
- Epoxy / Stainless steel AISI-304 / Stainless steel AISI-316 options:
 - Fairing/tray/suction grille
- Total Tactile Control
- AISI-316 Internal deposit kit for saltings and pickles
- EC fans
- Extra level display tray in epoxy, stainless steel AISI-304 or AISI-316 for salting and pickles:
 - Supplement tray two levels
 - Supplement tray three levels
- Movable plexiglass dividers for display tray: high/low
- Fixed plexiglass divider
- Treated wood packaging
 - Treated wood packaging Plus
- Accessories:
 - Roll holder
 - Paper bags holder (500 and 350mm)
 - Cutting board
 - Scale support
 - Knives holder
 - Plastic lunch box holder (rectangular and squared)
 - Hooks for plastic bags
 - Extra plug 16A
 - Turnomatic

OWEL CU

PVCU007822C00017

Available modulations

937 | 1250 | 1875 | 2500 | 3125 | 3750

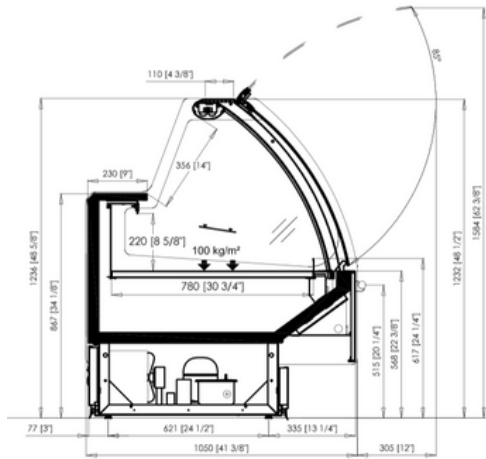


OWEL TR

PVTR007822C00017

Available modulations

937 | 1250 | 1875 | 2500 | 3125 | 3750

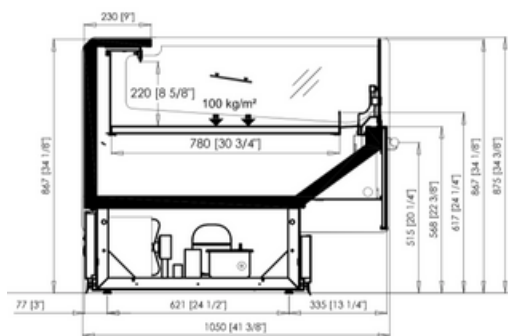


OWEL LR

PVLR007822C00017

Available modulations

937 | 1250 | 1875 | 2500 | 3125 | 3750

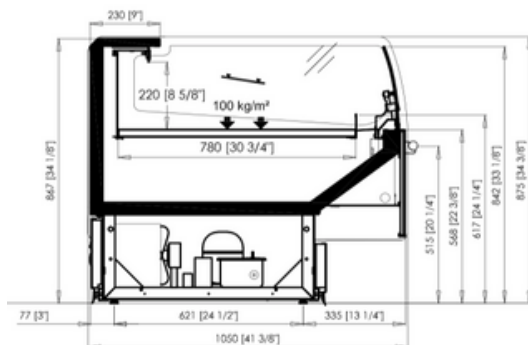


OWEL LS

PVLS007822C00017

Available modulations

937 | 1250 | 1875 | 2500 | 3125 | 3750



frost-trol



www.frost-trol.com



FROST-TROL, S.A
PLANTA 1
CV 159 KM 2 CP. 12180
Cabanes (Castellón) España
+34 964 34 27 40

FROST-TROL, S.A
PLANTA 2
AVDA. DEL CASTELL VELL, 188
12180
Castellón - España
+34 964 34 27 40

FROST-TROL, S.A
MÉXICO
AV. PIRULES, 134 B ESQUINA CON AV.
TEJOCOTES - 54769
Cuautitlán Izcalli - Estado de México
+34 964 34 27 40

FROST-TROL, S.A
FRANCIA
BUREAU B09 RUE LE BOUVIER
92340 - BOURG LA REINE
(PARIS) FRANCE

FROST-TROL, S.A
DUBAI
GOLDCREST EXECUTIVE
JUMERIAH LAKES TOWERS
(DUBAI) EMIRATOS ÁRABES
UNIDOS

